

# FIBERGLASS BASIN INSTALLATION INSTRUCTIONS

Prior to installation, inspect all materials to ensure no damages have occurred during shipping.

Excavate the hole large enough to accommodate the basin, all underground piping, recommended backfill material, and adequate working space.

Prepare the bottom of the excavated hold with 6" of backfill material or concrete pad. Check the base to insure it is level and smooth.

Install the basin on a gravel base or on a concrete pad. Anchor if necessary.

Concrete may be poured around the basin bottom if ballast (anti-flotation ring) is required for buoyancy.

Backfill with pea gravel, 4" to 6", around the entire periphery of the basin. Compact backfill material in 12" lifts. Stop and connect piping as required.

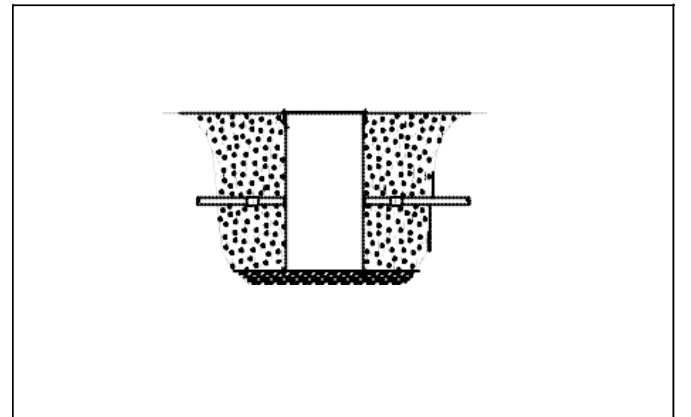
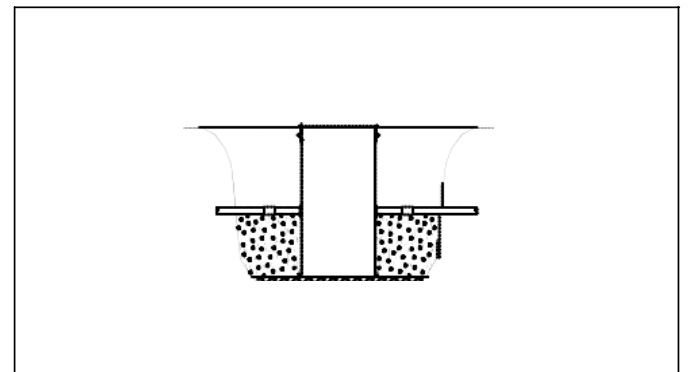
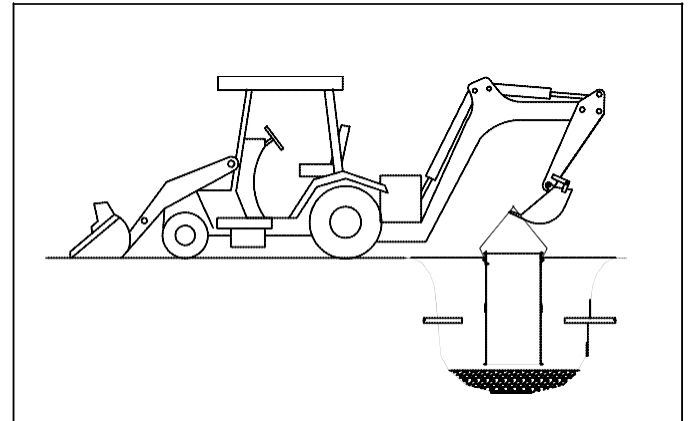
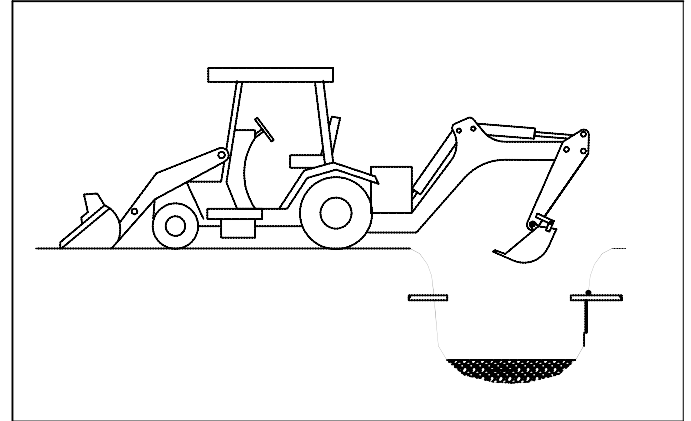
## RECOMMENED BACKFILL MATERIAL

Gravel or stone is recommended to be free flowing, naturally rounded aggregate with a particle size of not less than 3/8" or no larger than 3/4" in diameter.

*Caution* - If the burial depth is greater than the basin height, consult a factory representative to insure the structural integrity is not compromised. Reinforcement may be required.

*Caution* - In freezing conditions, the backfill material must be dry and free of ice. Do not use other backfill materials in areas where the specified materials are not available.

*Caution* - The manufacturer's warranty is void if other than approved backfill materials are used without manufacturer's prior written consent.



# VALVE BOX INSTALLATION INSTRUCTIONS

Prior to installation, inspect all materials to ensure no damages have occurred during shipping.

Excavate the hole large enough to accommodate the basin, all underground piping, recommended backfill material, and adequate working space.

Prepare the bottom of the excavated hold with 6" of backfill material or concrete pad. Check the base to insure it is level and smooth.

Install the basin on a gravel base or on a concrete pad. Anchor if necessary.

Concrete may be poured around the basin bottom if ballast (anti-flotation ring) is required for buoyancy.

Backfill with pea gravel, 4" to 6", around the entire periphery of the basin. Compact backfill material in 12" lifts. Stop and connect piping as required.

## RECOMMENED BACKFILL MATERIAL

Gravel or stone is recommended to be free flowing, naturally rounded aggregate with a particle size of not less than 3/8" or no larger than 3/4" in diameter.

*Caution* - If the burial depth is greater than the basin height, consult a factory representative to insure the structural integrity is not compromised. Reinforcement may be required.

*Caution* - In freezing conditions, the backfill material must be dry and free of ice. Do not use other backfill materials in areas where the specified materials are not available.

*Caution* - The manufacturer's warranty is void if other than approved backfill materials are used without manufacturer's prior written consent.

